



Piedini > a pressione > neoprene > 15-000

PIEDINI IN NEOPRENE

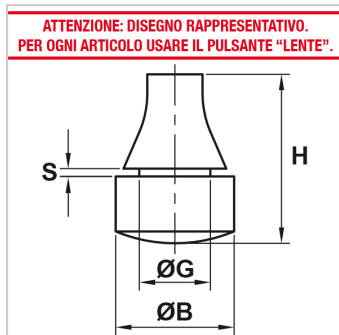
Materiale: neoprene.

Colore: nero.

Temperatura d'uso: -30°C / +90°C

Caratteristiche: questi piedini hanno un'eccellente tenuta al calore, all'invecchiamento ed all'ozono ed una buona resistenza ai grassi, agli olii, alle benzine ed ai solventi organici.

Sono dotati di grande elasticità e consentono un buon isolamento elettrico.



Il disegno è indicativo e le proporzioni potrebbero non corrispondere alle dimensioni in tabella o reali.

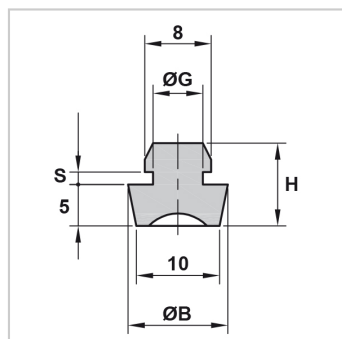
ARTICOLO	ØB mm	ØG mm	H mm	S mm	confezione pz.
15-018	12	6	10	1,5	100
15-021	6,2	-	5	-	100
15-026	15	9	21,5	1	100
15-068	12	5	10	1,8	100
15-142	14	8	14,5	2	100
15-145	13	9	16	1,5	100
15-149	13	7	11	3	100
15-199*	5,1	3,1	7	0,8	100
15-307	18	12,5	27	2	100
15-344	23	8	11,5	1,5	100
15-385	10	5	12	1	100
15-386	10	5	8	1	100
15-388	6,8	4,4	8,5	-	100
15-520	20	10	8,7	1	100
15-560	9	4	5	-	100
15-615	13	7	15,5	3	100
15-657	7,5	5,5	3,7	-	100
15-685	24	6	14	3,5	100
15-717	24	6	12	1,5	100
15-718	24	6	13	2,5	100
15-753	20	10	27	1,25	100
15-793*	7	3	12,2	-	100
15-827	12	5	10,6	1,8	100

*Articolo in nitrile (-25°C / +100°C).

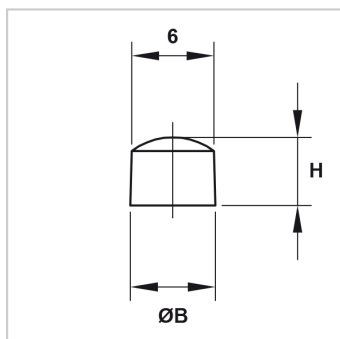
N.B.: IL DISEGNO TECNICO ACCANTO ALL'IMMAGINE E' RAPPRESENTATIVO. PER VISUALIZZARE IL DISEGNO TECNICO DI UN



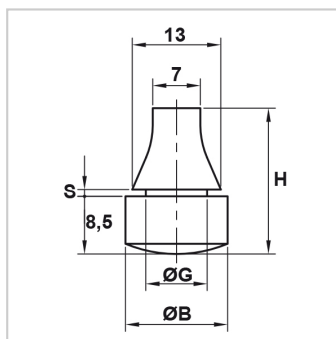
SINGOLO ARTICOLO CLICCARE SUL PULSANTE "LENTE".



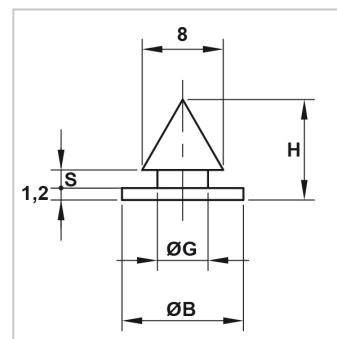
15-018



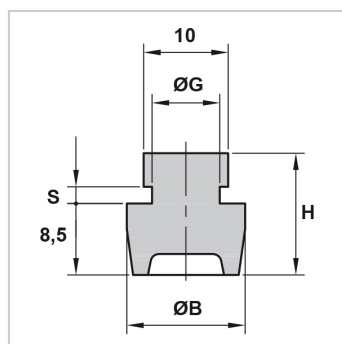
15-021



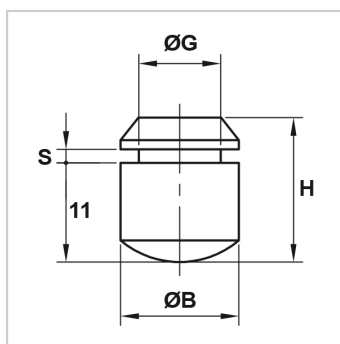
15-026



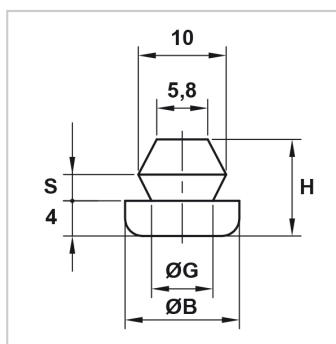
15-068



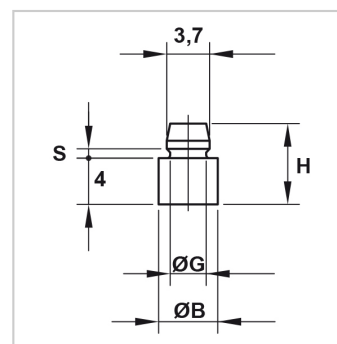
15-142



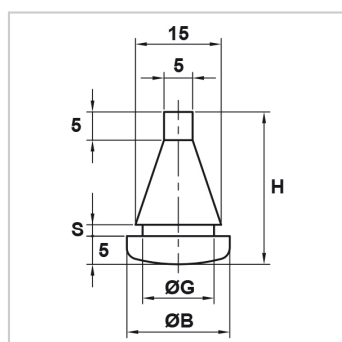
15-145



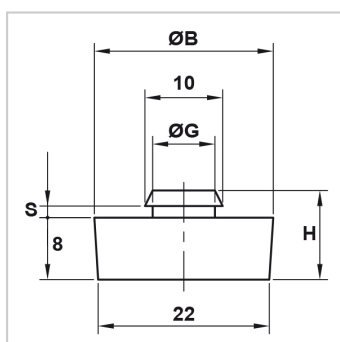
15-149



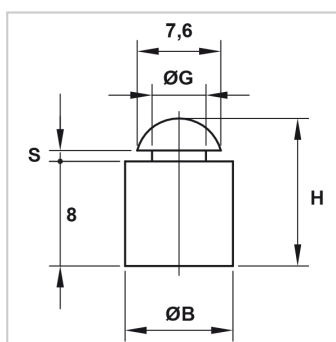
15-199



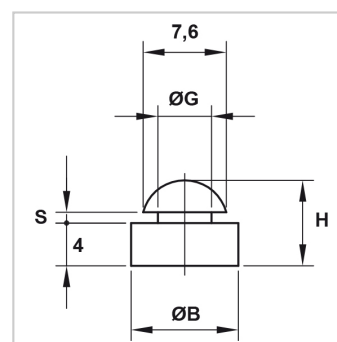
15-307



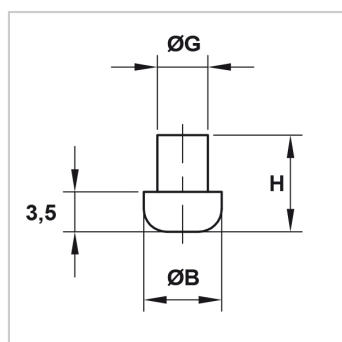
15-344



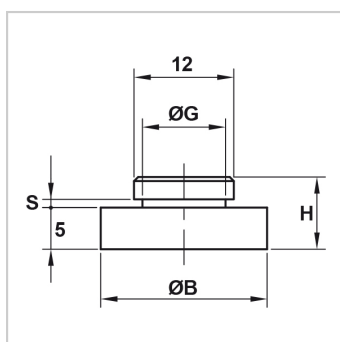
15-385



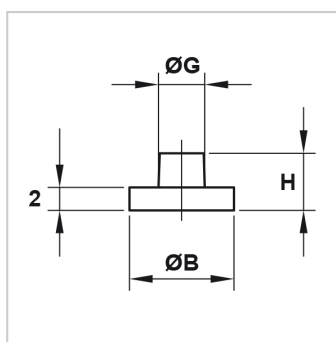
15-386



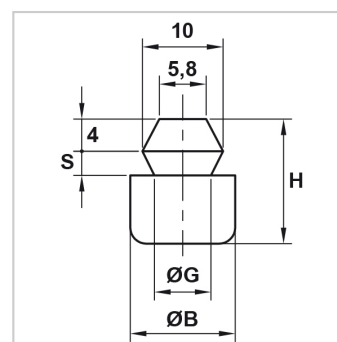
15-388



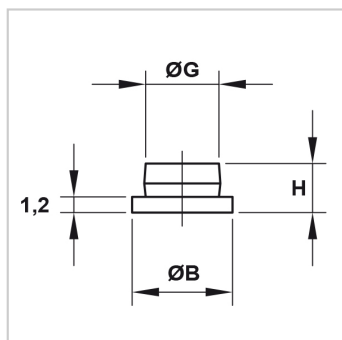
15-520



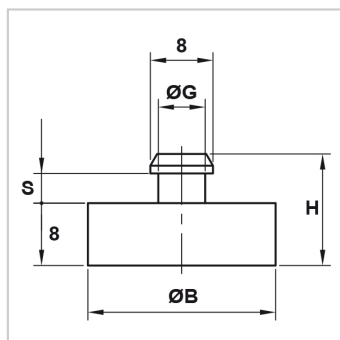
15-560



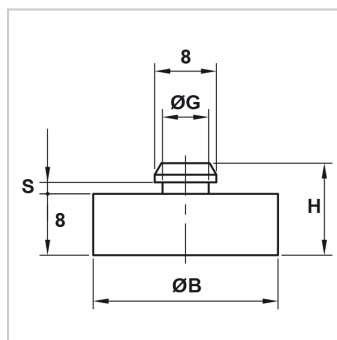
15-615



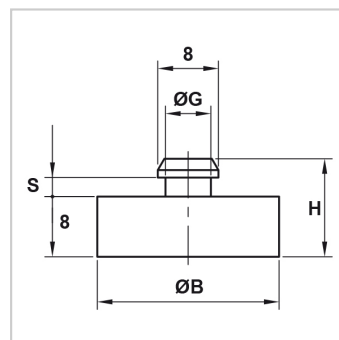
15-657



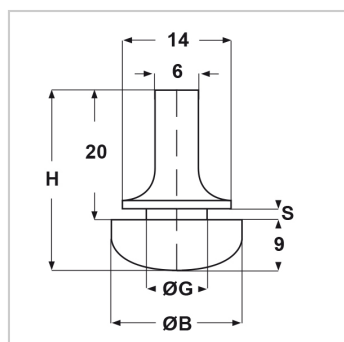
15-685



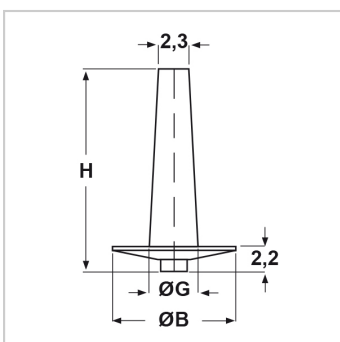
15-717



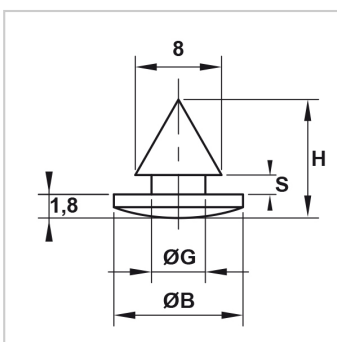
15-718



15-753



15-793



15-827